

Aetria

Control rooms made simple



CONTROL ROOMS MADE SIMPLE

Aetria is Datapath's solution for the complete design, management, operation and monitoring of control rooms.

By connecting workstations, video walls and content, Aetria gives system integrators the freedom to design and deploy the right solution, while enabling operators to focus solely on their core objectives.

AETRIA COMPONENTS

Aetria Designer

Aetria Designer is dedicated and free design software for Aetria solutions. It can be accessed online or installed on any Windows 10 system. Please refer to the Aetria Designer datasheet for more information.

Aetria Command Center

A unified interface for system integrators to design, manage and deploy control rooms solutions. Once deployed, control room operators can quickly and easily view the sources they need in real-time on any connected display surface.

Aetria Network Manager

Simplifies the setup and management of Aetria solutions. The Aetria Network Manager appliance is provided pre-configured with Aetria Command Center software, requiring only power and a connection to the network to get started.

Aetria Workstation

Aetria Workstation gives control room operators the flexibility to view multiple sources on their local workstation screens.

Using single or multiple monitors, operators can segment their desktop into dedicated zones to display any combination of sources available in Aetria alongside their main desktop and local applications.

Aetria WallControl

Aetria WallControl runs on a Datapath VSN controller to connect Aetria to a video wall, enabling seamless integration of video walls into the Aetria ecosystem.

Engineering the **world's best** visual solutions

**DATA PATH**
EXCELLENCE BY DESIGN

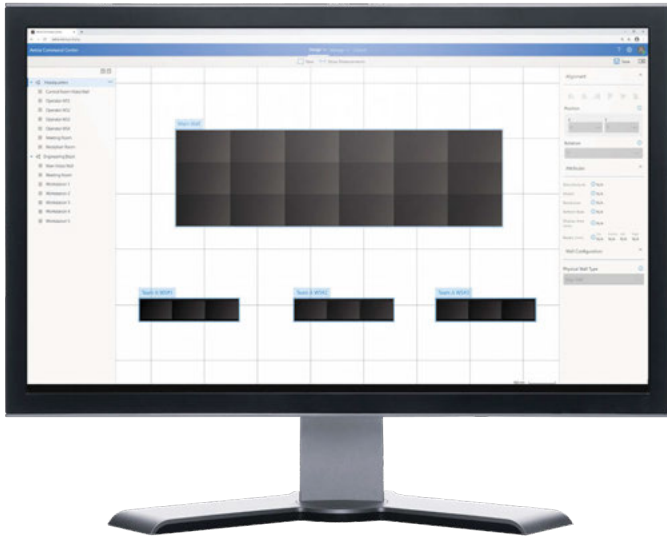
Aetria Command Center

COMPREHENSIVE AND UNIFIED INTERFACE

Sitting at the heart of the Aetria solution, Aetria Command Center provides a comprehensive unified interface for systems integrators to design, manage and operate control rooms solutions.

Once configured, control room operators use Aetria Command Center to quickly and easily view the sources they need in real-time on any connected display surface.

With built-in monitoring and diagnostics, Aetria Command Center ensures that all components of the Aetria system are functioning as required and provides real-time alerts to enable swift resolution if any issues occur.



SINGLE, ALL-IN-ONE APPLICATION

Aetria Command Center provides a single, centralized application for the complete end-to-end design, management and control of control room connectivity solutions.

ANY SOURCE, ANY SCREEN, ANY TIME

With Aetria Command Center every source is multicast, giving users the flexibility to send multiple copies of each source to any connected workstation or video wall as and when needed.

PROJECT IMPORT

Projects created in Aetria Designer can be directly imported into Aetria Command Center, allowing designs to be reviewed and approved before the procurement and installation of any hardware.

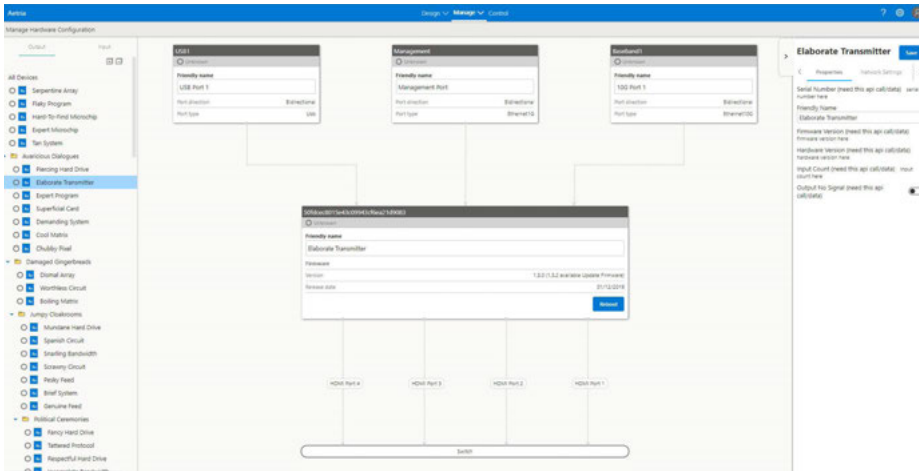
WEB-BASED MANAGEMENT INTERFACE

The intuitive web-based interface allows users to quickly and easily set up all required rooms and locations, video walls and displays, operator workstations and available sources and content.

SOURCE MANAGEMENT MADE EASY

With unique features for source management and identification, Aetria Command Center makes managing hundreds of sources easy. For each source, users can assign friendly names and add text labels (on-screen-display) to enable quick identification.

Cropping is available to allow selecting areas of interest within a source. Users can also create banners to add supplementary information to video walls or displays, and borders and frames can be added to sources to quickly highlight, group or identify them.



Aetria Command Center ensures easy management of sources.

TEMPLATES AND LAYOUTS

Using the built-in template and layout functionality, users can populate connected video walls or workstations with multiple sources with a single click.

Layouts are easy to design using the drag and drop interface, and saved layouts can be shared with other users.

Any layout can be shown on any connected display surface of any size, from a large video wall to a single operator screen.

SECURITY FIRST

User accounts and permissions are configured in Aetria Command Center by the allocated system administrator(s). Each configured user can be granted access to individual sources and screens to give full access control of all assets across the entire Aetria ecosystem.

MONITORING AND DIAGNOSTICS

With built-in monitoring and diagnostics, Aetria provides real-time monitoring of all connected devices, ensuring smooth operation and swift response if issues occur.

EASY INSTALLATION

Aetria Command Center is delivered pre-installed on our approved 1U rack mount appliance for quick and easy installation.

CONFIGURATION

Aetria Command Center is provided pre-installed on the Aetria Network Manager appliance.

AVAILABLE LANGUAGES

English, French, German, Italian, Spanish.

Aetria Network Manager

THE AETRIA NETWORK MANAGER APPLIANCE

Aetria Network Manager is an appliance that simplifies the setup and management of Aetria solutions. It is provided pre-configured with Aetria Command Center software, requiring only power and a connection to the network to get started.



SPECIFICATION

PROCESSOR

Xeon CPU E-2224 3.4GHz

MEMORY

8GB 2666MT/s DDR4 ECC UDIM

STORAGE

1TB 7.2K RPM SATA 6Gbps 512n
3.5in Hot-plug HDD

SUPPORTED SYSTEM

Datapath Aetria Network Manager
& Command Center

SUPPORTED OS

Windows 10, Linux

BROWSER ACCESS

Safari, Edge, Chrome

SECURITY

HTTPS, TLS, TPM 1.2/2.0,
SecureBoot, Cryptographically
signed firmware. Silicon root of
trust.

ETHERNET

2 x 100/1000Mbps full/half duplex

I/O & PORTS

1 x front panel USB 2.0, 2 x USB 3.0
rear panel, 1 x IDRAC, VGA, serial
connector

POWER SUPPLY

Dual hot plug redundant PSU
350W

CHASSIS DIMENSIONS

434mm (w) x 595mm (d)

FORM FACTOR

1U Rackmount

WEIGHT

13.6kg

ENVIRONMENTAL (STORAGE)

Temperature: -45°C to 65°C

Humidity: 5-95% with 33°C

dew point, non-condensing

Shock: Six consecutively executed

pulses in positive and negative

x,y,z planes each side of the

system of 71G for up to 2ms

Vibration: 1.88Grms @10-500Hz

for 15 min

ENVIRONMENTAL

(OPERATING)

Temperature: 10°C to 35°C

continuous operation (up to
950m above sea level)

Humidity: 10-80% RH with 29°C

dew point, non-condensing

Shock: One pulse each side of the

system of 71G for up to 2ms

Vibration: 1.88Grms @10-500Hz

for 15 min

NOISE LEVEL

Max 38dB(A)

COMPLIANCE

CE, CB, UL, EAC, CCC, BIS, FCC

Aetria Workstation

EMPOWERING THE CONTROL ROOM OPERATOR

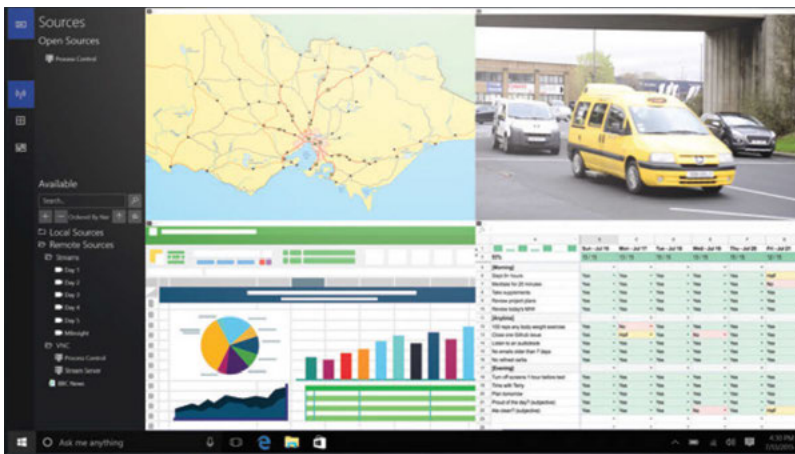
Aetria Workstation gives control room operators the flexibility to view multiple sources on their local workstation screens.

Using single or multiple monitors, operators can segment their desktop into dedicated zones to display any combination of sources available in Aetria alongside their main desktop and local applications.

Using Aetria Workstation, sources can be easily viewed, controlled or shared to other operator workstations or any connected video wall for wider viewing.



Aetria Workstation gives operators the flexibility to segment their desktop into dedicated zones and create a 'personal video wall' to display.



Control any combination of sources available in Aetria alongside local applications.

USER-DEFINED ZONES

Using Aetria Workstation, users segment their desktop surface into multiple areas or zones for viewing available content alongside local applications.

SOURCE PREVIEW

Users can preview any configured source in the Aetria network on their local workstation.

COLLABORATION IS MADE EASY

Aetria supports multicast for each source, allowing users to share multiple copies of sources to any connected screen(s) or video wall.

TEMPLATES AND LAYOUTS

Using the built-in template and layout functionality, Aetria Workstation allows users to save their current view for quick recall when needed.

With layout 'auto-fit', users can show layouts saved on their local workstation on any connected display surface of any size, from a large video wall to a single operator screen.

MODELS AVAILABLE

Aetria Workstation Standard:

- Support for up to 4 screens (either HD or 4K)
- Workspace templating
- Access to network sources (SoftSQX, Datapath agent, VNC, RDP only)

Aetria Workstation Professional:

- All Aetria Workstation Standard features
- Support for more than 4 monitors
- Support for mixing HD and 4K monitors
- Access to Aligo and Arqa sources (capture card support)

AVAILABLE LANGUAGES

English, French, German, Italian, Spanish.

COMPATIBILITY

Windows 10.

MINIMUM REQUIREMENTS

Contact your Datapath Representative for more information on your Workstation options.

Aetria WallControl

VIDEO WALLS, CONNECTED

Powered by Datapath's proven video wall technology, Aetria WallControl enables seamless integration of video walls into the Aetria ecosystem.

The hardware behind Aetria WallControl is Datapath's range of VSN systems. Video wall controllers that have been powering video walls in critical control rooms for over a decade. The Aetria WallControl software connects VSN powered video walls to the Aetria system and enables complete, seamless control.

Placement and organization of content on connected video walls is easy with support for layouts, templates, on screen display (OSD) and carousels.



MULTI-WALL

Aetria allows multiple walls to be delivered by a single VSN system. Walls in separate areas of a building can be independently driven from a single location.

Multiple walls can be easily set-up and if required each wall can be assigned a unique set of sources or video resources.

DISPLAY CONTROL

Use the Display Control within Aetria Command Center to control monitors, including the ability to switch on/off, and manage brightness and contrast settings.

VISION ENCODE

Vision Encode allows sources such as HDMI feeds to be captured within the VSN video wall controller. The sources can be displayed on a video wall, or encoded into H.264 and streamed out so that the content can be displayed in other locations.

USER RIGHTS MANAGEMENT

User rights management can be deployed on each VSN system. Users can be assigned roles on a per wall basis with each role allowing access to a subset of sources or layout files. A user may have unrestricted access on Wall 1 but be confined to pre-determined layouts on Wall 2.

SPECIFICATIONS

For the specifications on Datapath's VSN range of video wall controllers, please refer to product datasheets available at www.datapath.co.uk/datapath-products/vsn-controllers.

Premium Graphics Package

ENHANCED GRAPHICS FEATURES

The Premium Graphics Package is a collection of features designed for the Control Room, allowing enhanced window capabilities to any content, on any end point. The package allows users to apply the following features to windows/source:

If the Control Room includes the Premium Graphics Package, a package must also be purchased for every Aetria wall controller and Aetria Workstation.

CROPPING

The Premium Graphics Package allows the cropping of sources. Cropping is done by selecting the area of interest from a snapshot of the source. Save the crop to make it available for instant deployment to the video wall, and as part of a layout file.

ON-SCREEN DISPLAY (OSD)

The On-Screen Display feature allows users to place text over Vision and SQX windows. This allows operators to name windows so viewers can quickly identify what they are seeing on the video wall. The OSD also allows users to add variables to the window such as Time and Date, Frame Rate & Source resolution as well as being to set the text size, color and font. OSD is available on Windows 7 and Windows 10 using the Datapath WDDM driver.

BORDERS/FRAMES

The Borders and Frames feature allow users to add a color surround to the images on the video wall. Adding a border will surround the content with a chosen color irrespective of the aspect ratio, whilst adding a frame will add a color around the window on the video wall. Borders and Frames can be used to signify the importance of a piece of content, to quickly identify the source type or to categorize sources that may look similar but are monitoring different subsystems.

BANNER

Create banners for display on the video wall. Users specify the banner text (either by entering manually or by specifying an RSS feed to automatically parse), text scrolling direction (or setting as static) and the background color for the banner. Transparent backgrounds are also supported.



Borders surround content with color irrespective of aspect ratio, and Frames surround the window on a video wall.



Banners can be displayed onto video walls with choices on text format, scroll direction, and backgrounds.

License Tiers and Package Options

YOUR REQUIREMENTS

Before choosing your license options, please discuss your requirements with a Datapath Representative.

AETRIA WALLCONTROL TIERS

Feature	Standard	Professional
Number of Connected Displays	Unlimited	Unlimited
Standard Sources (Vision, Web, Local Apps, Videos / images)*	Yes	Yes
SQX / IP Decodes	8	Limited by Hardware
Aligo/Arqa RX to capture card	Yes	Yes
Multi-Wall	No	Yes
Display Control	Yes	Yes
User Rights Management (URM)	Yes	Yes
VSN Redundancy (requires identical hardware to the VSN it is paired with including license)	Yes	Yes
Network Manager Redundancy (requires additional complete hardware including license)	Yes	Yes
Tablet Interface	Yes	Yes
Vision Encoding	No	Yes

AETRIA WORKSTATION TIERS

Feature	Standard	Professional
Number of Workstation Monitors	Up to 4	Unlimited
HD Monitor Support	Yes	Yes
4K Monitor Support	Yes	Yes
Mixed HD and 4K Monitor Support	No	Yes
Create Desktop Templates	Yes	Yes
Access Aetria Network Sources (via User Rights Management)	Yes	Yes
ActiveSQX and/or Video Capture Support	No	Yes
Access to Aetria Network Manager and Command Center Components	Yes	Yes

PREMIUM GRAPHICS PACKAGE

If the Control Room includes the Premium Graphics Package, a package must also be purchased for every Aetria wall controller and Aetria Workstation.

The package allows users to apply the following features to windows/source:

- Cropping
- On-Screen Display (OSD)
- Borders/Frames
- Banners

* The Premium Graphics Package will be available for Aligo Receivers from Aetria version 1.2.

Order Codes

AETRIA NETWORK MANAGER

PRODUCT	CODE
Aetria Network Manager License	AETRIA-NM-LIC
Aetria Appliance	AETRIA-SRV1

For the full Aetria Network Manager pre-configured appliance, both license and hardware items must be ordered.

AETRIA WORKSTATION

PRODUCT	CODE
Aetria Workstation Standard License	AETRIA-WS-STD
Aetria Workstation Professional License	AETRIA-WS-PRO

AETRIA WALLCONTROL

PRODUCT	CODE
Aetria WallControl Standard License	AETRIA-WC-STD
Aetria WallControl Professional License	AETRIA-WC-PRO

AETRIA PREMIUM GRAPHICS PACKAGE

PRODUCT	CODE
Aetria Premium Graphics Package	AETRIA-PGP

**Datapath UK and
Corporate Headquarters**
Bemrose House, Bemrose Park,
Wayzgoose Drive, Derby,
DE21 6XQ, United Kingdom

☎ +44 (0) 1332 294 441
✉ sales-uk@datapath.co.uk

www.datapath.co.uk

Datapath North America
2490 General Armistead Avenue,
Suite 102, Norristown,
PA 19403,
USA

☎ +1 484 679 1553
✉ sales-us@datapath.co.uk

**DATAPATH**
EXCELLENCE BY DESIGN