

# VSN Series

## Quick Start Guide

VSNMicro 600



# VSNMicro 600 Quick Start Guide

## WELCOME

Thank you for purchasing the Datapath VSNMicro 600 wall controller. The aim of this document is to quickly guide you through the process of initial setup.

For detailed information, the User Guide can be downloaded from **[www.datapath.co.uk](http://www.datapath.co.uk)**

Each Datapath VSNMicro 600 is custom built to order therefore the components, number and type of inputs will differ from system to system.

Each VSNMicro 600 is shipped with a printed diagram outlining the specific types of inputs and outputs and where they are located on the rear panel of the system.

Any input cables supplied are clearly labelled and will indicate which of the video input connectors they relate to.

When purchased with WallControl 10, the license dongle will be affixed to an external USB port. Please do not remove this dongle, removal of this device will cause WallControl 10 to stop functioning.



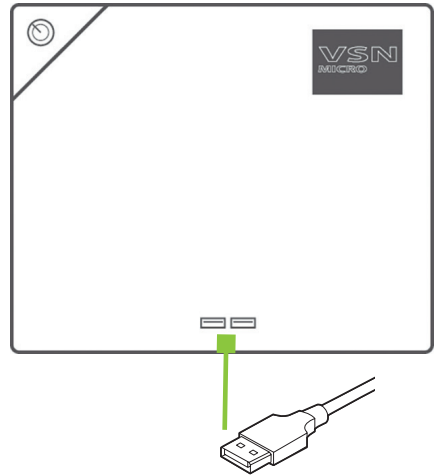
# VSNMicro 600 Quick Start Guide

## KEYBOARD AND MOUSE

Connect Keyboard and Mouse to USB Ports.

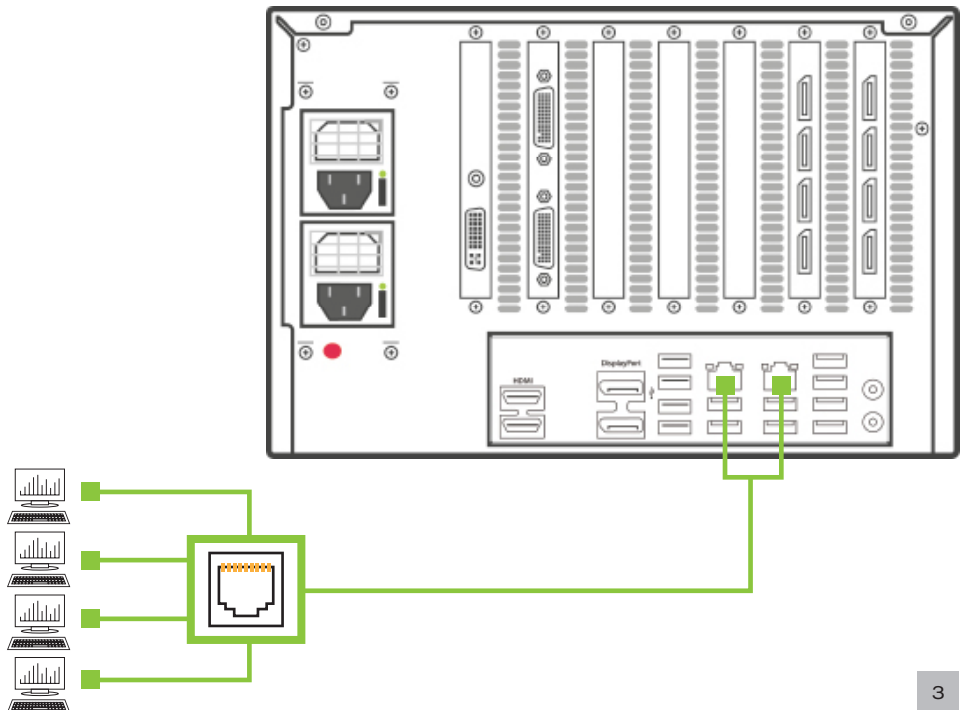
USB Ports are located on both the front and rear panels of the system. It may be more convenient to use the USB ports on the front for easy access.

- 8 x USB 3.2 Gen 2 on the rear panel (Blue)
- 4 x USB 2.0 on the rear panel
- 2 x USB 2.0 ports on the front panel



## CONNECT TO A NETWORK (OPTIONAL)

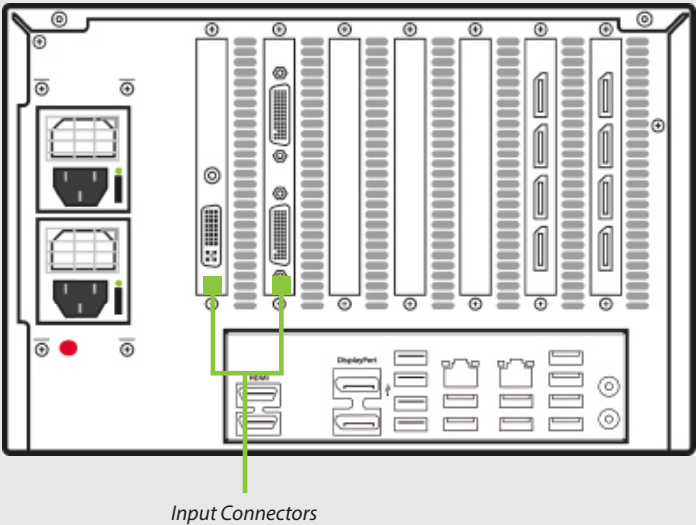
If the VSNMicro 600 is to be used over a network, connect it to a network port (cables not supplied) using one of the LAN connectors on the rear panel.



# VSNMicro 600 Quick Start Guide

## CONNECTING VIDEO INPUT SOURCES

As each VSNMicro 600 is custom built, the number and type of video inputs will differ from system to system. If you have purchased a VSNMicro 600 with video inputs, the input connectors are located on the rear panel as shown below.

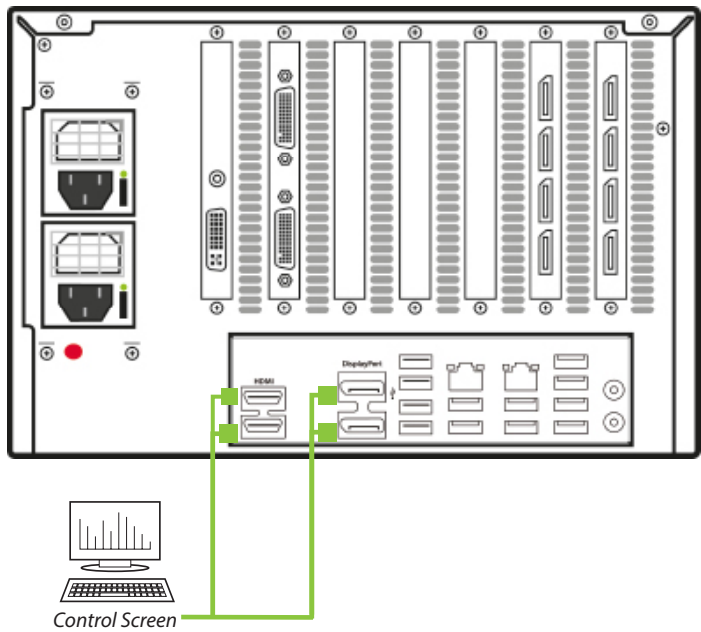


The printed diagram shipped with the VSNMicro 600 shows the types of input Connect the input sources to the relevant input connectors, cables may be supplied for some inputs, see content list supplied with the system.

# VSNMicro 600 Quick Start Guide

## CONNECTING A CONTROL SCREEN

Your VSNMicro 600 is factory configured to use a control screen connected to the system internal graphics device. Connect your control screen to one of the four connectors on the motherboard panel (2 x HDMI, 2 x DisplayPort) on the rear of the VSNMicro 600. A control screen is initially required to set up the system including the operating system (Windows 10).



# VSNMicro 600 Quick Start Guide

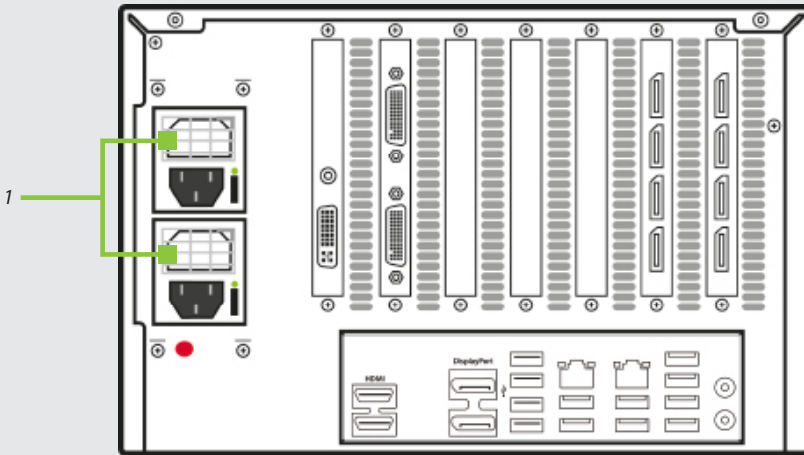
## POWERING UP THE SYSTEM

If you have an ATX powered system, go straight to diagram 2 (Page 7).

For systems with an RPSU:

During transit, the Power Supply Modules are removed therefore you are required to fit them prior to using your VSNMicro 600. To fit the Power Supply Modules, remove all the packaging and carefully slide them into the power supply unit on the rear of the system with the protective grill uppermost **(1)**. You will feel and hear a firm click when they are in place. For detailed instructions on how to fit the Power Supply Modules see the PDF User Guide which can be found on the Documentation Media.

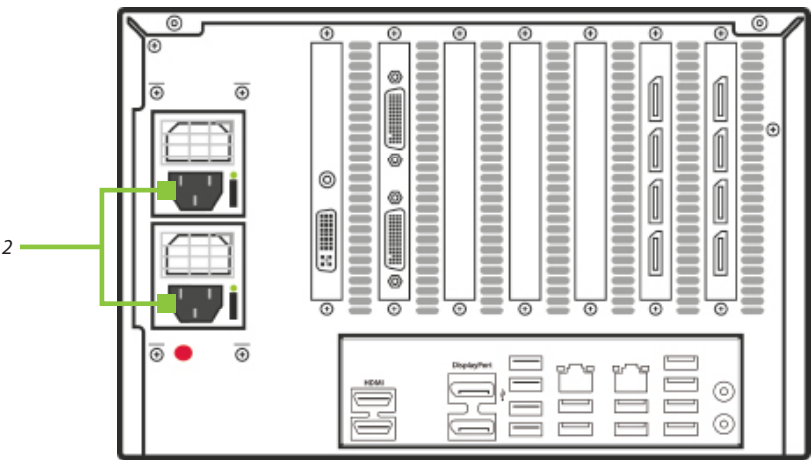
Never use force when inserting the Power Supply Modules as this can cause damage not covered under the Datapath warranty.



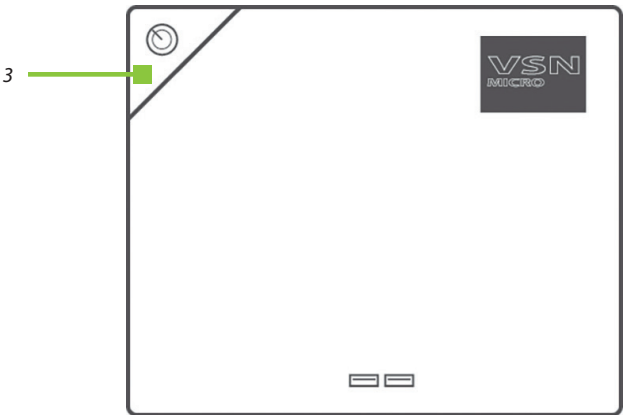
Ensure Power Supply Modules are correctly fitted.

# VSNMicro 600 Quick Start Guide

Connect power **(2)** cables (single cable for ATX) then plug into and turn on the mains supply.



Press the on/off button on the front of the VSNMicro 600 **(3)** to power up. There will be a short delay followed by the sound of the internal fan. The fan noise will subside when the system has fully booted.



# VSNMicro 600 Quick Start Guide

## WINDOWS 10 SETUP

Once the system has been built and configured in our factory the operating system is resealed, therefore when switching the system on for the first time, the operating system setup commences. You will be prompted to enter information to set up the Windows 10 operating system.

There is no requirement for users to activate Windows 10, activation is done automatically. An internet connection is required to complete the automatic activation.

You are strongly recommended to create a 'Restore USB Flash Drive' (See page 17).

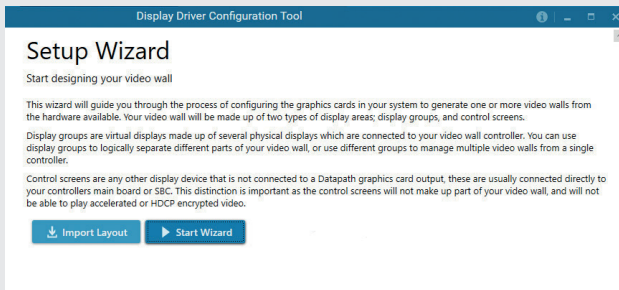
## DISPLAY CONFIGURATION

Once the Windows 10 setup is complete, the system will reboot and the control screen will show a Windows desktop displaying the Display Driver Configuration Tool (DDCT). The DDCT will guide you, step by step, through the configuration of the graphics outputs, enabling you to quickly create one or more video walls.

On the final stage of the configuration, the DDCT will recommend the optimum way to connect your VSNMicro 600 to your video wall displays.

A full description of the DDCT can be found in the User Guide.

It is recommended that you carefully read the instructions on each page of the wizard. To commence your wall configuration, click on **Start Wizard**.

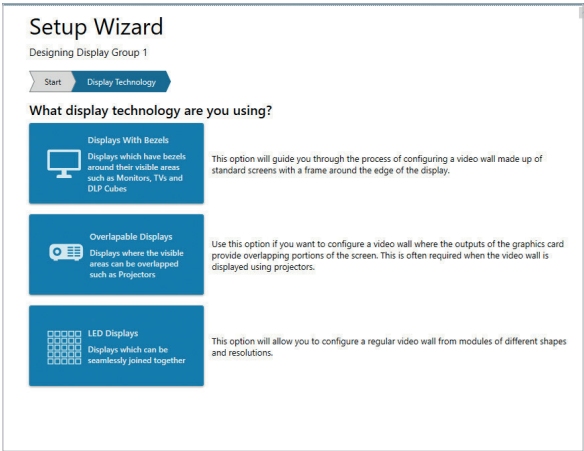




# VSNMicro 600 Quick Start Guide

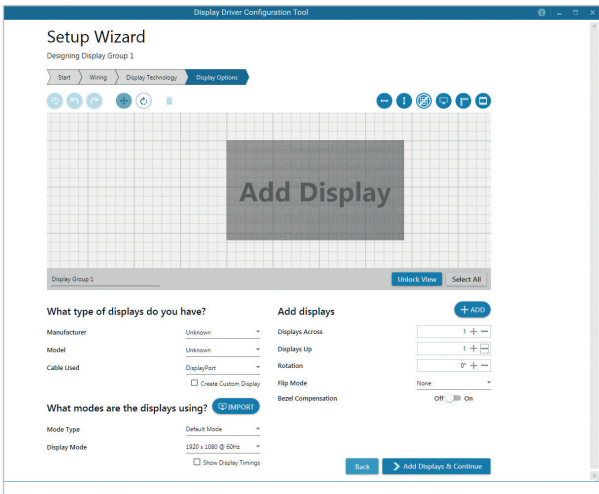
Select the type of displays being used on your wall:

- Displays With Bezels – Monitors, TVs and DLP Cubes
- Overlapable Displays – Projectors
- LED Displays



Click on '**Continue**'.

The tool will then display a configuration page for the type of display you selected.



# VSNMicro 600 Quick Start Guide

## What Type of Displays do you Have?

Use the **Manufacturer** and **Model** dropdown lists to select the displays you are using for your wall. If the wall consists of different displays, select each one in turn to configure the type of display. The DDCT has an extensive database of displays, however if your display is not contained in the list, you can input the details manually by selecting **Create Custom Display**.

It is strongly recommended that measurements are taken from the display manufacturer's specifications if available.

What type of displays do you have?

Manufacturer

Unknown

Model

Unknown

Cable Used

DisplayPort

☒ Create Custom Display

Display Area Width

192 cm

Display Area Height

108 cm

Left Bezel

0 cm

Right Bezel

0 cm

Top Bezel

0 cm

Bottom Bezel

0 cm

## Add Displays

Add Displays is available for displays with bezels or overlapable displays. Use the **Displays Across** and the **Displays Up** to create your Display Group. Once created, configure the displays using **What Type of Displays Do You Have?** When using overlapable displays **Display Overlap** becomes available, enabling you to select a percentage of overlap between displays.

Add displays

+ ADD

Displays Across

1

Displays Up

1

Rotation

0°

Flip Mode

None

Bezel Compensation

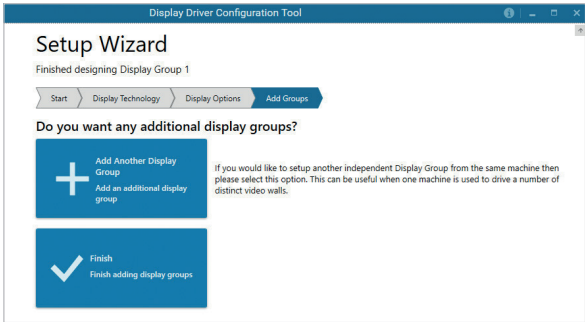
Off

Back

> Add Displays & Continue

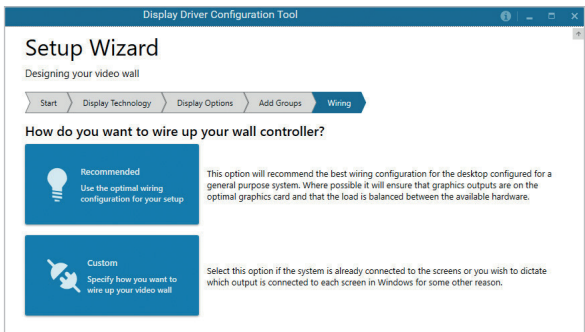
# VSNMicro 600 Quick Start Guide

Once the layout has been created and the type(s) of displays configured click on **Add Displays & Continue** and the following dialogue is displayed:



At this stage of the set up you can choose to create another independent display group from the same system, this would be considered if one machine will be used to drive a number of separate video walls. See User Guide for more details.

If another display group is not required, click on **Finish** and the following page is displayed:

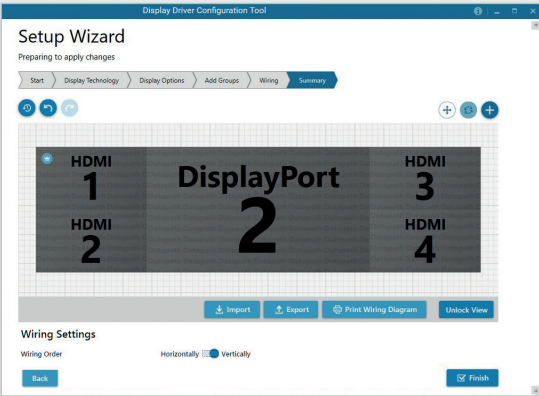


The DDCT can recommend the best wiring configuration for your system, ensuring the load is balanced between the graphics hardware. Click on **Recommended** for the optimal configuration for your system.

Should you wish to manually wire your system and decide for yourself which output is connected to which display, click on **Custom**.

You will next be presented with the **Summary** page:

# VSNMicro 600 Quick Start Guide

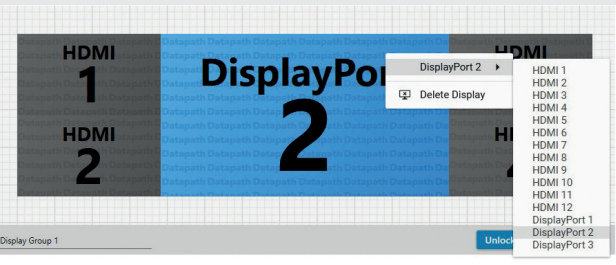


If you chose to have the DDCT configure your wiring this page will display the recommended connections, as shown above. Connect each display to the corresponding output connector on the rear of the VSNMicro 600. The printed input/output diagram shipped with your VSNMicro 600 shows where the display connectors are located on your system. If your VSNMicro 600 is connected to a printer, you can print a copy of the wiring diagram using the Print a Wiring Diagram function.

*Note: The Datapath Diagnostic Suite must be installed to print a wiring diagram. The suite can be downloaded from the Datapath website downloads page should it not already be installed on your system.*

The Datapath Diagnostic suite can be downloaded from the Datapath website downloads page.

To manually select the outputs right click on the display group and select **Edit**, you can then select each individual display and allocate your preferred output. Right click on a selected display to reveal the list of outputs available:



# VSNMicro 600 Quick Start Guide

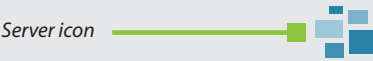
When all outputs have been allocated by either **Recommended** or **Custom** click on **Finish**. You will then be prompted to save the changes to your video wall and restart your system. When restarted, the Windows Desktop will be displayed across the wall.

You can access the configuration tool at anytime should you wish to make changes. Right click on the desktop and select **Display Driver Configuration Tool** from the menu.

# VSNMicro 600 Quick Start Guide

## WALLCONTROL 10 (OPTIONAL)

Before opening the WallControl 10 Client interface you may need to start the WallControl 10 Server should it not start automatically. The Server icon is displayed in the System Tray.



If the Server fails to start automatically, start the Server by clicking on it in the **All Programs** menu. The WallControl 10 Client will only detect servers that are running.

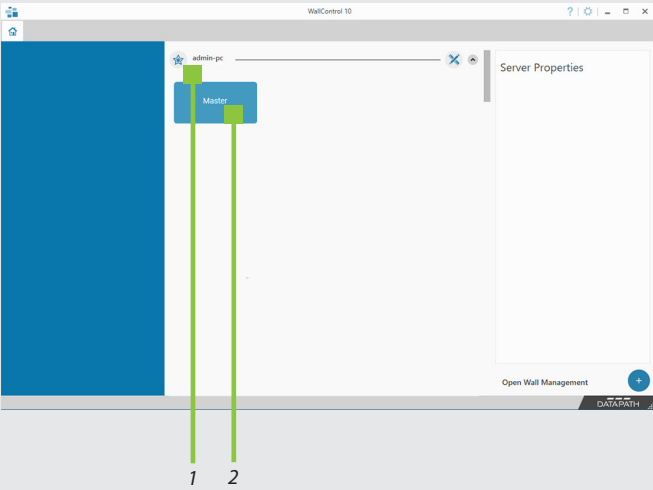


Start | All Programs | WallControl 10 - Server

### Open the WallControl 10 Client



Start | All Programs | WallControl 10 - Client



1	Indicates the Servers available to connect to.
2	A representation of the Wall associated with the Server.

# VSNMicro 600 Quick Start Guide

Click on the wall representation to open the display wall tab (2).



When opened, the display wall tab shows a live representation of the physical wall and the sources available to display on it. To place a source on the video wall, simply click on the required source in the Sources Tab and drag it onto a preferred position on the display wall representation.

The application help file contains information explaining how multiple sources can be selected, how to use and create templates and how to save, recall and share layout files.

## **The WallControl 10 - Security Administration Client** **(Only Available with WallControl 10 Pro)**

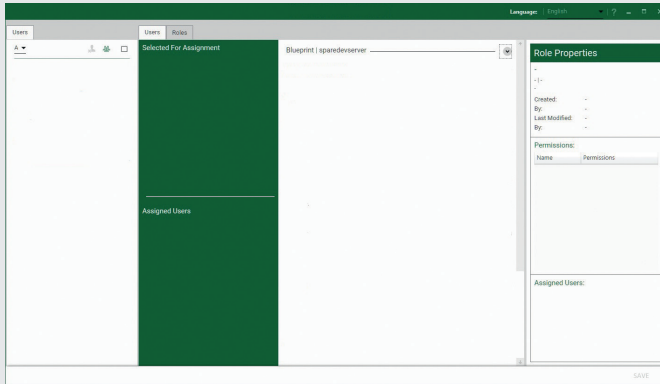
A WallControl 10 Pro serial dongle must be inserted into a vacant USB port. If the dongle is removed or swapped, the Security Client will not open and an error message is displayed, therefore it is important the dongle is not removed.

If you have purchased WallControl 10 Pro, the licence dongle can be located in the accessories box.

# VSNMicro 600 Quick Start Guide



Start | All Programs | WallControl 10 - Security Administration Client



The WallControl 10 - Security Administration Client allows Administrators to assign specific users to roles on a wall by wall basis. For example, a user can be assigned a role allowing unrestricted access on one wall but assigned a role on another wall which only allows the opening of pre-determined layouts.

Prior to the Security Client being used for the first time, the SecurityOnOff.exe program must be running to enable security protection for the application. To manually run the SecurityOnOff.exe, ensure you are logged into Windows® with Administrator Rights.

Locate and double click on the SecurityOnOff.exe file:

## **Program Files|WallControl 10| Security Server|SecurityOnOff**

The WallControl 10 Security Application help file contains information on how to:

- Import users from the Windows Active Directory into the database.
- Create and edit roles.
- Assign permissions to providers, layouts and sources giving specific roles access to them.
- Assign roles to walls.



# VSNMicro 600 Quick Start Guide

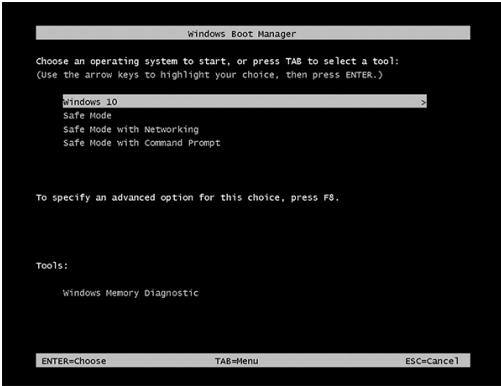
## CREATE A RESTORE USB FLASH DRIVE

To create your Restore USB Flash Drive you will need a USB memory stick with a minimum capacity of 32GB. It is recommended that once your restore flash drive has been created, it is stored in a safe place accessible to personnel who may be required to restore the system.

You will need to boot into the Windows Restore portal to begin the process of creating your Restore USB Flash Drive.

Switch on your machine and when the boot messages display the **Choose an operating system** screen, use the cursor keys to select **Windows Restore** as shown in the following dialogue.

It should be noted that the dialogue is only displayed briefly, approximately 3 seconds.

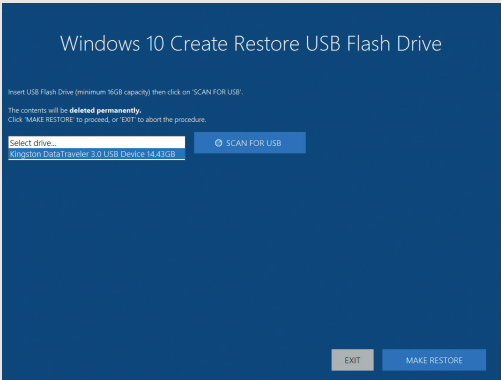


This will lead you to the Windows 10 Restore Menu as shown below:



# VSNMicro 600 Quick Start Guide

Click on the **Create Restore Media** icon then insert the USB flash drive into a vacant USB slot (min capacity 32GB).



It should be noted that any data currently stored on the USB Flash Drive will be deleted permanently during this process. Click on **SCAN FOR USB**.

The application will now scan the system USB ports to detect your USB flash drive. Once the flash drive has been discovered, it will appear in the **Select Drive** dropdown list. Select the flash drive you wish to use from the list and click on **MAKE RESTORE**.

Once the Windows 10 Restore USB Flash Drive has been created a **Build Complete** dialogue is displayed:



Click on **OK** to complete the process.

# VSNMicro 600 Quick Start Guide



Class A Declaration of Conformity

Datapath Ltd declares that this product complies with the essential requirements and other relevant provisions of:

- European Union Directives 2014/30/EU, 2014/35/EU, 2011/65/EU and 2015/863/EU
- UK Government Electrical Equipment (Safety) Regulation 2016, Electromagnetic Compatibility Regulation 2016 and RoHS Regulation 2012

A copy of our Declaration of Conformity is available on request.

## **Datapath Limited**

Bemrose House

Bemrose Park

Wayzgoose Drive

Derby, DE21 6XQ

UK

A full list of product compliance certifications can be found in the product User Guide on the Documentation Media supplied with the system.



## **CERTIFICATION**

This device complies with part 15 of the FCC Rules. Operation is subject to the following two conditions:

(1) This device may not cause harmful interference, and (2) this device must accept any interference received, including interference that may cause undesired operation.”

Note: This equipment has been tested and found to comply with the limits for a Class A digital device, pursuant to part 15 of the FCC Rules. These limits are designed to provide reasonable protection against harmful interference when the equipment is operated in a commercial environment. This equipment generates, uses, and can radiate radio frequency energy and, if not installed and used in accordance with the instruction manual, may cause harmful interference to radio communications. Operation of this equipment in a residential area is likely to cause harmful interference in which case the user will be required to correct the interference at his own expense.

#### **Datapath UK and**

##### **Corporate Headquarters**

Bemrose House, Bemrose Park,  
Wayzgoose Drive, Derby,  
DE21 6XQ, United Kingdom

☎ +44 (0) 1332 294 441

✉ sales-uk@datapath.co.uk

#### **Datapath North America**

2490 General Armistead Avenue,  
Suite 102, Norristown,  
PA 19403, USA

☎ +1 484 679 1553

✉ sales-us@datapath.co.uk

#### **Datapath Japan**

Axon Hamamatsucho,  
1-1-23 Shibadaimon,  
Minato-ku,  
Tokyo-to,  
105-0012, Japan

✉ sales-jp@datapath.co.uk

**[www.datapath.co.uk](http://www.datapath.co.uk)**

