

WallControl 10 for Genetec Security Center

Integrated video wall
management software
for security markets



THE MODERN SECURITY SUITE

Security Suites require a great deal of information to be viewed, processed and actioned. Security operators not only require instant access to the correct camera feed but also need to present and share it to a wider audience. These demands mean video walls are becoming a must-have feature of modern security rooms, and are being used to present a wider number of sources to operational teams. Using video walls allow IP and CCTV feeds to be put on a larger surface while the inclusion of locally captured inputs, browser windows and local media ensures that critical information is available to all.

Having a single all in one solution is critical to the smooth operation of the security suite. Operators must be able to maintain their focus at all times and not have to worry about dealing with more software applications than necessary.

Datapath's WallControl 10 plug-in allows users of Genetec's Security Center to directly view content on the video wall from within the Genetec interface.

INTEGRATED VIDEO WALL CONTROL

Using WallControl 10 for Genetec Security Center, workstation operators are able to seamlessly drive video walls directly, without the need to switch between different applications.

The WallControl 10 plug-in is available directly in the Genetec interface. Using its simple interface, operators can send live or recorded camera feeds to the video wall. Whether that's a single camera to the wall or all of the cameras present in the current operators workstation view.

For those times when responding to an ongoing incident and sending content to the video wall, the operator is able to "Track" their view. Tracking to the video wall will automatically display what is in the operators view without further interaction. Tracking allows the wall to be populated in real time allowing operators to focus on their ongoing tasks.

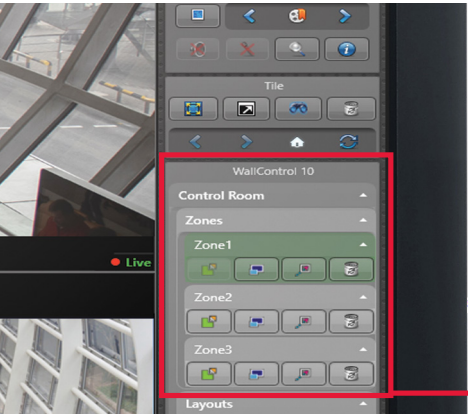
Engineering the **world's best** visual solutions


DATAPATH
EXCELLENCE BY DESIGN

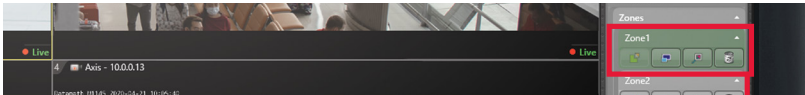
Integrated video wall management

ZONES

The WallControl 10 Genetec plug-in utilises an innovative zonal system. For each video wall on the system, a number of zones can be defined. Each of these zones can be pre-programmed in advance and be made up of either multiple screens or part of a screen. Operators simply select the zone they wish to work with and content can be sent to the zone at the click of a button.



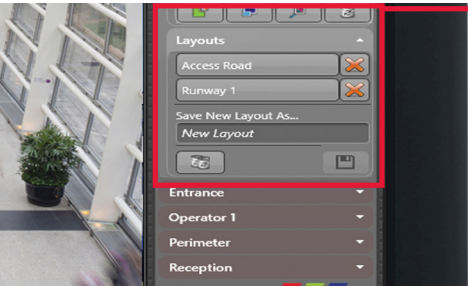
A number of zones can be setup for each video wall and allotted to a user



Feature buttons provide complete control of the video wall



Genetec Security Center interface with Datapath WallControl 10 integration



Create a number of layouts for each video wall



Content appears in the pre-programmed zones on the video wall

Integrated video wall management

FEATURES

Full WallControl 10 Pro features are available via the plug-in. From within Security Center, users are able to recall saved layout files that may include local inputs such as TV feeds. Multiple dedicated video walls can also be driven from a single WallControl 10 server each of which can be accessed from with the Security Center interface.

To aid in setting the system up, WallControl 10 will auto-populate all necessary cameras from within the Genetec server.

Share View

This feature takes the camera feeds from within the operator "View" and displays them on the video wall within the selected zone.

Track My View

Selecting Track my View will automatically send the cameras from each operator view to the video wall without the need for the operator to share each time. Tracking my view enables the operator to focus on their work without having to remember to additionally add cameras to a video wall.

Extract Cameras

If the user view contains camera carousels, whereby a number of cameras can be cycled in a loop, the Extract feature allows the cameras currently "on top" to be sent to the video wall. This allows an operator to see a camera of particular interest on the wall whilst the carousel continues on their local screen.

Deploy Layout files

As is possible when using WallControl 10, Security Center users are able to deploy saved layout files onto the video wall. This allows for captured video, such as a TV signal or PC to be directly displayed onto the wall alongside the video cameras.

Camera Discovery

WallControl 10 for Genetec Security Center will recognise all cameras that are available within Genetec's server and automatically populate WallControl 10 with the correct settings making the set up process simple.

Integrated video wall management

INSTALLATION

WallControl 10 for Genetec Security Center is installed on the Genetec server as well as the client that needs to be able to use the video wall.

COMPATIBILITY

The Plug-in is supported in Genetec Security Center version 5.11

WallControl 10 for Genetec Security Center requirements: Datapath VSN OR iolite system with WallControl 10 Pro installed.

AVAILABLE LANGUAGES

WallControl 10 for Genetec Security Center software is available in Chinese, English, French, German, Italian, Japanese, Polish, Portuguese, Russian, Spanish and Turkish.

MODELS AVAILABLE

Order Code: WALLCON10GEN

WallControl 10 for Genetec Security Center.

The following SDK must be added to the end user Genetec license GSC-1SDK-DATAPATH-WALL. An SDK license must be added & available for every workstation and every main server where the plug-in is installed. Therefore for all installations a minimum of 2 will be required.

**Datapath UK and
Corporate Headquarters**
Bemrose House, Bemrose Park,
Wayzgoose Drive, Derby,
DE21 6XQ, United Kingdom

☎ +44 (0) 1332 294 441
✉ sales-uk@datapath.co.uk

www.datapath.co.uk

Datapath North America
2490 General Armistead Avenue,
Suite 102, Norristown,
PA 19403,
USA

☎ +1 484 679 1553
✉ sales-us@datapath.co.uk

